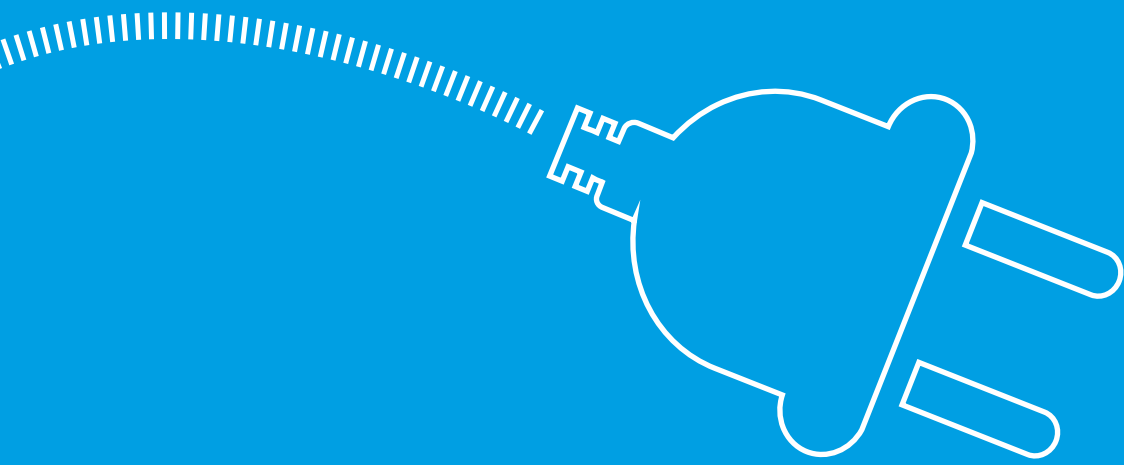


GTV
LIGHTING

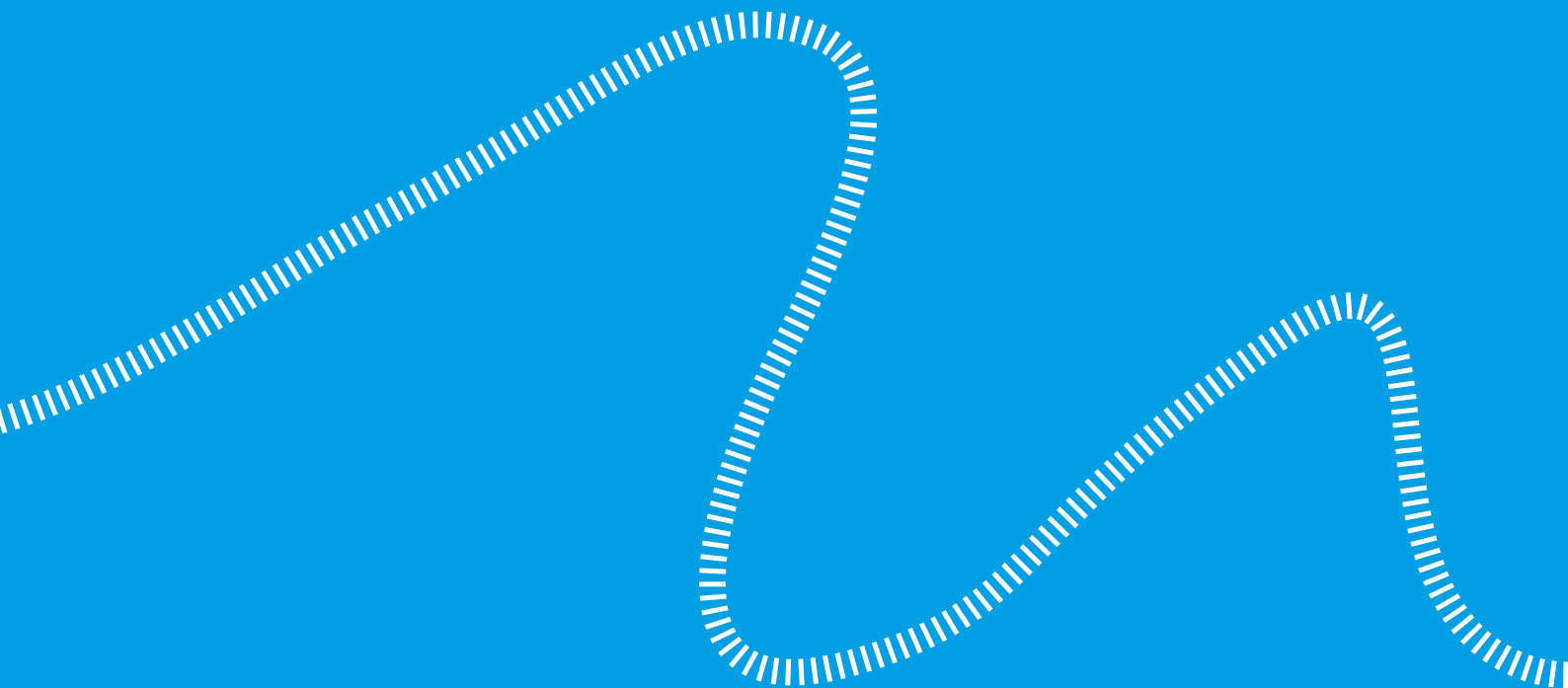
FURNITURE POWER SOCKETS

ergonomics and functionality





When designing and furnishing a suitable workspace we need to consider several factors: who will be using the space, how often and in what way. In addition to choosing a desktop, chair and lighting it is important to ensure the availability of electrical sockets. It is their location that determines the arrangement of the work space.

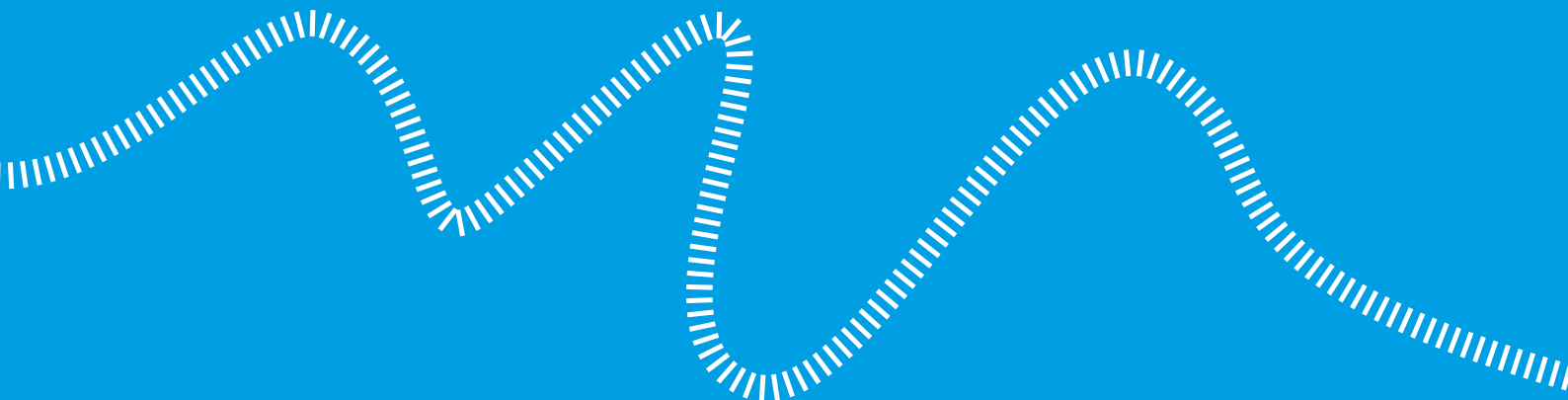


ace,
ral
the
what
ing
ing,
the
oc-
at
nent

The solution is to install modern through-desk power outlets in the desktops.

Aesthetically finished recessed power strips become part of a desk, conference table or kitchen counter top. They blend in with the worktop without taking up any space. They are fitted with elegant and subtle pop-up covers to protect the sockets against flooding and dirt. Once closed, the outlets become invisible.

The through-desk power strips bring a new quality to a space. They increase work comfort and ergonomics in the corporate or home office. GTV Lighting offers modern and convenient pull-out power sockets for any type of worktop – kitchen, table, desk and many others. They are all equipped with additional USB-C ports.



NEW

power socket

BAR



Two sockets: french/schuko

Multimedia version: HDMI and RJ45

USB A+C charger with a power of 20W, 18W Fast Charge, 1x HDMI

Easy HDMI and RJ45 connection via plug sockets

White/black colour



Control the cables by creating an elegant arrangement

BAR furniture power socket is a very convenient solution for homes and offices. A modern handle enables simple and discreet installation, with no need to drill/mill holes in the worktop. Thanks to this, the effect is very aesthetic. The compact combination of various inputs ensures a friendly organization of cables in one place and always at hand. BAR furniture power socket is available in two basic colours, which make it easy to match the colours to furniture worktop and interior style.



NEW

recessed power
socket with a lid

SHUTTER



Simple installation in a fi 80 mm hole by turning the ring of the case



French/schuko socket

White/black colour



Modern furniture power socket with a designer lid

A single, recessed furniture power socket is a functional addition in the office and at home. It makes it possible to aesthetically bring power to where it is needed. It brings order and tidiness to the desk without tangles of cables. Furniture power socket, made of solid and durable materials, has a fancy lid resembling a camera shutter. It can be installed individually, in a duo, trio or in other combinations, providing access to the necessary number of power sources.

An additional advantage is the simple and quick installation and the finish in two basic colours that can be easily matched to the style of the interior.

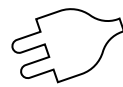


NEW

pop up
power socket

TOWER

French/schuko socket



Quick installation by mounting in a fi 80 mm hole

USB A+C with a power of 20W

Fast Charge 18W socket

White/black colour



Pop-up furniture power socket in a modern style

Tower pop-up furniture power socket is a combination of functionality and elegance. Compact dimensions blend into the mounting surface. In the retracted position, only the elegant grille is exposed. Protrusion of the socket requires only pressing the inner square. The practical combination of an electrical socket, USB and the Fast Charge function will universally meet all needs. It is perfect for home, office or public spaces, adding comfort in the best style.



NEW

recessed power
socket with a lid

FLIP

Multimedia version: 1x RJ45, 1x HDMI



French/schuko socket

2x USB A 12W charger



Easy HDMI and RJ45 connection via plug sockets

White/black colour

Fi 80 mm hole



Recessed furniture power socket with a lid - comfort and elegance

Flip recessed furniture power socket with a lid is a solution for apartments, offices or premises. It is perfect where convenient organization of cables is necessary. The device equipped with a combination of different sockets allows for effortless connection of various types of electronics with no need for extension cords. It can be installed in the countertop or side wall of furniture, and its installation is easy and it does not require drilling or milling holes. Aesthetic workmanship and refined details look great. The socket has a discreet lid, thanks to which it is extremely minimalistic without cables plugged in. It is available in two universal colours that perfectly match the interior design.



power socket

PRESTINO



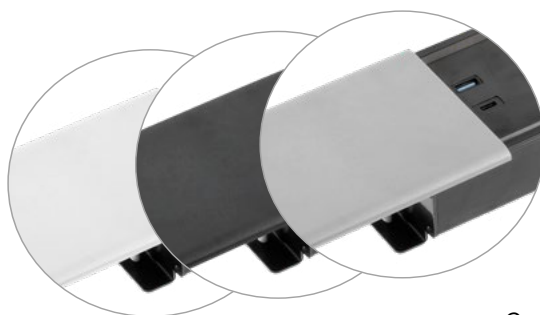
Magnetic slide cover

Automatic selection of charging parameters

Schuko/French power outlets max 16 A



Available ports: USB-A, USB-C, HDMI 2.0, RJ45 CAT.6



Three colour versions: white, black, aluminium

The practical and elegant design increases the comfort of your work.

Prestino outlet is equipped with a sliding magnet shield to protect the sockets against moisture and dirt. Looks great with any worktop, creating an almost seamlessly smooth surface. Perfect for office desks, meeting rooms, showrooms, shops and hotels.

It will prove useful wherever aesthetics are important.

The three finish colours – white, black and aluminium – will go well with black, grey and brown desktops as a desk accessory.



pop up
power socket

CAMINO



10 W wireless charger



Night light function



Additional voltage switch in outlets

The most versatile USB-A and USB-C ports



Colour variants: white and black

The Camino through-desk power strip is an example of ergonomics and minimalism. Does not take up much space, so it is perfect for small tables and students' desks. The night light function will especially appeal to "night owls". The solution will also work well in the kitchen when preparing meals. The Camino pop-up power outlet is convenient to use – just pull it upwards until the bottom part locks into place. Inductive chargers are already becoming the standard. That is why Camino pull-out power socket has one, too.



pop up
power socket

AVARO



Compact size



Wide range of colours: white, black, aluminium

Inverted mounting possible




The small, compact through-desk outlet is a perfect solution for small spaces, meeting the need for the most important power sockets. Avaro can be fitted in home desks, kids' rooms, or kitchens. Inverted mounting for overhead cabinets and side mounting for cabinet sides and kitchen islands available.



pop up
power socket

AVARO PLUS

Compact size



Wide range of colours: white, black, aluminium

Versatile USB-A and USB-C ports



5 W wireless charger

The stylish Avaro Plus pop-up outlet is an extended version of the Avaro socket. Also features an inductive charger, eliminating the need to plug a traditional charger into your phone. Avaro is therefore great for long hours working at your desk, especially if you use your phone a lot. This solution will be particularly appreciated by people working long office hours from home. Avaro Plus can also successfully find its place in hotels, shops and at universities. Finished in black, white and aluminium. Easy to choose a colour to match your desk.



pop up
power socket

COMFORT PLUS



SOFT OPEN system

Multifunctionality thanks to 2 x RJ45 and 2 x USB-A sockets

Charging start beeper

Network cables integrated in the outlet

5W wireless charger



Can maximum ergonomics go hand in hand with design? The Comfort Plus pop-up power socket proves that this is not only possible, but necessary. The circular socket with an inductive charger on top significantly improves the quality of work, which is enhanced even more thanks to the start of charging beeper signal. What is more, Comfort Plus ergonomic size significantly saves your desktop space. When closed, the socket does not take up any space and blends discreetly into the tabletop surface. Equipped with a shock absorber, the socket slides out automatically and smoothly. (SOFT OPEN).

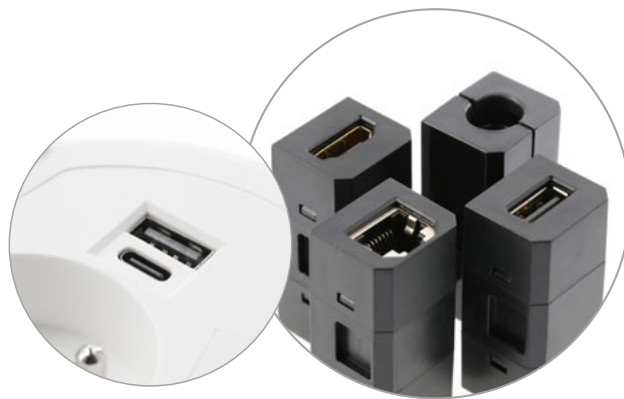


power socket

CHARGER PLUS



5 W inductive charger with beeper



Interchangeable USB-A, HDMI, RJ-45 ports

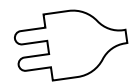
Extra low profile for mounting above a drawer

The easy-to-use, minimalist Charger Plus socket is designed for all kinds of desks and worktops, e.g. in the kitchen. The very low profile allows for comfortable blending into the tabletop. The Charger Plus socket features an inductive charger on the inside of the lid. Just lift the lid to charge your phone. It has three interchangeable sockets that make it a versatile solution for a co-working area.



pop up
power socket

COMFORT



Intuitive and very fast installation



Space-saving storage under the desktop

Large number of sockets: 3 x AC and 2 x USB-A



The Comfort through-desk power socket can be applied universally in private and commercial spaces, such as offices, conference rooms, studios, shops or hotels. Assembly is very easy thanks to the detailed and clear instructions. The user can choose a variant with or without two 5V/2A USB ports. The socket easily retracts into the worktop after installation. The silver finish adds elegance, discretion and originality.



power socket

CHARGER



Quick and intuitive installation



Stylish cover cap

Additional USB-A port



Compact, minimalist design for anyone who appreciates space. The Charger through-desk power socket is designed for small desks, and so it is especially dedicated for kids, students, tables, wherever every scrap of space is important. When you have finished working, simply close the lid.

Easy to install. In addition to the power socket, users get a USB port for charging mobile devices at 5 V/2 A.



power socket

CHARGER MINI



Compact size



USB charger remains accessible when lid is closed

The mounting hole is only 60 mm



The compact socket that will come in handy on small surfaces, such as desks and tables in students' rooms. It will work well in other settings as well, such as the kitchen tops or hotel rooms.


The Charger Mini socket is easy to install.

Simply drill a 60mm diameter hole.



power socket

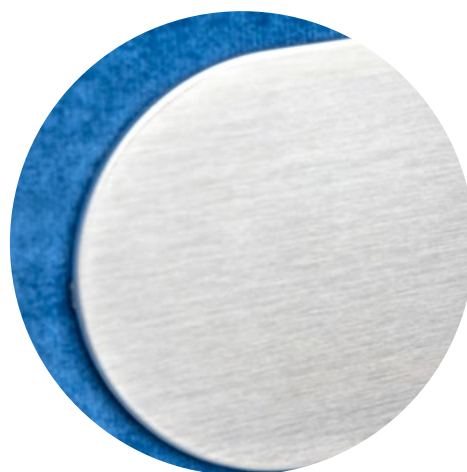
SLIDE

Sliding cover 



USB socket for charging mobile devices 5 V / 2.4 A

Brushed steel finish



Small, stylishly designed socket will work well in exposed places, such as office and conference tables or even bedheads. The brushed steel finish adds an elegant touch. One power socket and a 5 V/2 A USB port available. After unplugging, simply slide the cover to close the socket, which will blend in perfectly with the worktop surface.



Mounting hole fi 60 mm



Power cord - 190 cm



pop up power socket

Ø 60

Saves space



Available in 2 colours: black and silver

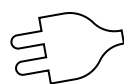
Mounting hole fi 60

Pull-out through-desk power socket strips are among the most popular solutions on the market. They are suitable for tight spaces – small desks, tables, or kitchen worktops. When pulled out, this power strip has three power sockets and two USB ports for charging mobile devices. Finished with a stylish cover. Available in two universal colours: black and silver.



pop up power socket

Ø 100



Stylish chrome cover cap



The most popular office solution

Available with Schuko and French outlets

Mounting hole fi 100 mm

Wherever there is no need to calculate every inch of space, a slightly larger version with a diameter of 100 mm can be used. When pulled out, three power sockets are available. Finished with a stylish cover. Available in two universal colours: black and silver.



pop up
power socket

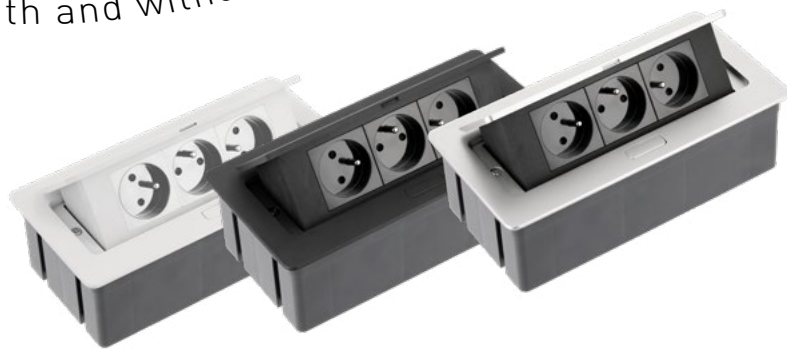
SOFT



SOFT TOUCH finish



Comes with and without USB-A port



Wide range of colours: white, black, aluminium

No collision with 3 angle AC plugs

The SOFT through-desk power strip is the most popular recessed socket model in the GTV offer. Thanks to its versatility, it is suitable for all types of worktops: in the kitchen, the office and the living room. Available in three colour options: white, black and silver. Pleasant to the touch satin finish makes the SOFT power strip even more stylish and improves your working comfort. A big advantage is the asymmetrical arrangement of the sockets, so that there is no problem with connecting three angled plugs at the same time.



pop up
power socket

rectangular



Integrated 150 cm power cord

Available with USB 5V 2A port



Reliable design

The classic rectangular recessed socket will be a great solution for minimalists and all people who value simplicity. Invisibly blends in with the surface of any desk or table. It is available in standard colours to match most worktops: white, black and aluminium. The product comes with 3 power sockets or 2 power sockets and 2 USB-A ports.



pop up
power socket

through-desk



USB 5V 2A port

Flexible letterbox brush



Can be closed without disconnecting the devices

This is the most common type of power socket strip used in offices. Thanks to its flexible letterbox brush, it can be closed without disconnecting the devices it powers. This allows for comfortable work and placing e.g. a projector or a computer on the power strip. When closed, it allows for keeping the workspace in perfect order.

Holds power sockets and USB ports for charging mobile devices.



power socket corner



Power cord - 150 cm

Includes over-voltage and over-heat protection

Can be installed in cabinets without loss of space

USB 5V 2A port

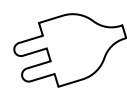


An angled power socket strip perfect for spaces where it is not possible to recess the power strip in the desktop. It gives us a lot of wiggle room and is recommended to fit under cabinets, in the corner of a room or even inside cabinets. The tilted angle makes the socket easy to access. Available in aluminium with a black panel. The product is available with 3 and 4 power outlets. USB ports for charging mobile devices.



wireless
charger

LUX



Power cord - 150 cm



Stylish chrome finish

Suitable for worktops up to 32 mm thick

Power 10 W

The wireless charger is a very useful device in the office and at home. This modern, elegant model from our offer is a convenient way to charge mobile devices in any conditions. Its undoubted advantage is the stylish finish, which makes the charger a decorative element of the tabletop. This contributes to maintaining spatial order, especially in exposed, representative areas such as conference room tables, meeting places for business clients, or modern offices and public areas such as museums and galleries.

Details can add prestige and comfort.



wireless
charger

hidden



Power cord - 150 cm



Installation without damaging the desktop

Power 10 W

The wireless charger that is hidden under your desktop is a great solution for minimalists who do not like a lot of electrical devices on top and appreciate modern ideas. Such positioning of the charger frees up space available on the desk and any device can be charged by placing it over the desktop, above the charger. An additional advantage of the charger is that you do not have to drill through the tabletop to install it. Easy and comfortable to use.



wireless
charger

USB



Wireless and traditional USB-A charging

USB 5V, 2.1 A port

Wireless charging power of 10 W

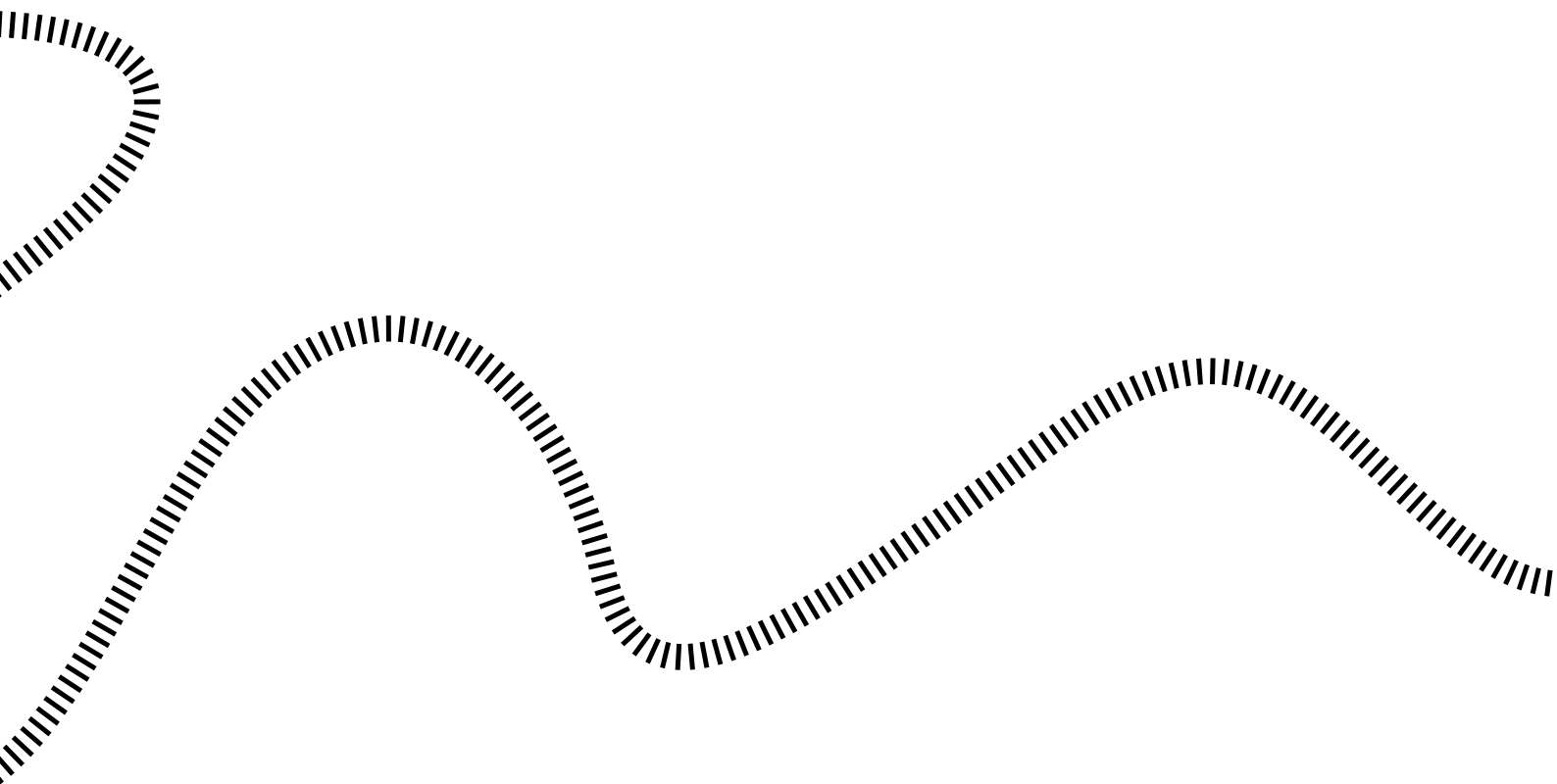
Universal inductive charger with an additional USB port so that you can connect any device, such as a desk lamp, a second phone, a tablet, or a charger for wireless headphones. This additional feature makes it a very versatile device that facilitates your daily work.

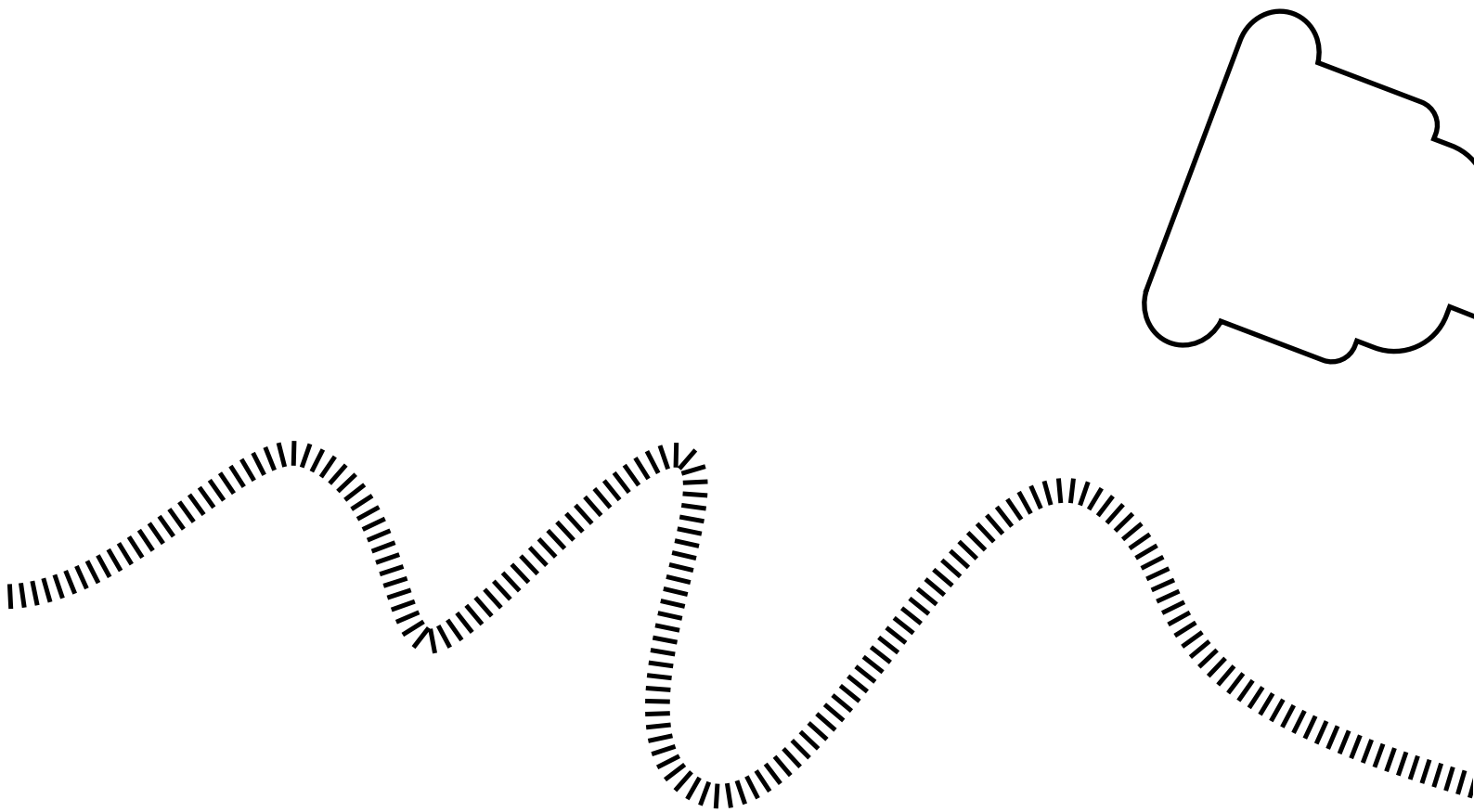


furniture power socket / charger	indeks	socket type	max permissible load	wireless charger	USB	additional slot	power cord	color
PRESTINO	AE-PB2FPRES-20	2 x french	3500 W	-	USB-A USB-C	1 x RJ45 1 x HDMI 2.0"	150 cm	black
	AE-PB2SPRES-20	2 x schuko						aluminium
	AE-PB2FPRES-53	2 x french						white
	AE-PB2SPRES-53	2 x schuko						
	AE-PB2FPRES-10	2 x french						
	AE-PB2SPRES-10	2 x schuko						
CAMINO	AE-BPW2FCAM-20	2 x french	3500 W	10 W	USB-A USB-C	-	150 cm	black
	AE-BPW2SCAM-20	2 x schuko						white
	AE-BPW2FCAM-10	2 x french						
	AE-BPW2SCAM-10	2 x schuko						
AVARO	AE-PB1FAVA-20	1 x french	3500 W	-	2 x USB-A	-	150 cm	black
	AE-PB1SAVA-20	1 x schuko						aluminium
	AE-PB1FAVA-53	1 x french						white
	AE-PB1SAVA-53	1 x schuko						
	AE-PB1FAVA-10	1 x french						
	AE-PB1SAVA-10	1 x schuko						
AVARO PLUS	AE-PB1FAVAP-20	1 x french	3500 W	5 W	USB-A USB-C	-	150 cm	black
	AE-PB1SAVAP-20	1 x schuko						aluminium
	AE-PB1FAVAP-53	1 x french						white
	AE-PB1SAVAP-53	1 x schuko						
	AE-PB1FAVAP-10	1 x french						
	AE-PB1SAVAP-10	1 x schuko						
COMFORT PLUS	AE-BPW4F120P-20	4 x french	3500 W	5 W	2 x USB-A	2 x RJ45	150 cm	black
	AE-BPW4S120P-20	4 x schuko						white
	AE-BPW4F120P-10	4 x french						
	AE-BPW4S120P-10	4 x schuko						
CHARGER PLUS	AE-BPW1FACP-20	1 x french	3500 W	5 W	USB-A USB-C	1 x RJ45 1 x HDMI 2.0 1 x USB-A	150 cm	black
	AE-BPW1SACP-20	1 x schuko						white
	AE-BPW1FACP-10	1 x french						
	AE-BPW1SACP-10	1 x schuko						
COMFORT	AE-BPW3S100U-53	3 x schuko	3600 W	-	2 x USB-A	-	190 cm	aluminium
	AE-BPW3U100U-53	3 x french						
	AE-BPW4S100-53	4 x schuko						
	AE-BPW4U100-53	4 x french						
CHARGER	AE-BPW1S2UCH-80	1 x schuko	3600 W	-	2 x USB-A	-	150 cm	silver
	AE-BPW1U2UCH-80	1 x french						
CHARGER MINI	AE-BPW1U1UCH-53	1 x french	3600 W	-	1 x USB-A	-	190 cm	silver
	AE-BPW1S1UCH-53	1 x schuko						
SLIDE	AE-BPW1S1UCH-51	1 x schuko	3500 W	-	1 x USB-A	-	190 cm	aluminium
	AE-BPW1U1UCH-51	1 x french						

furniture power socket / charger	indeks	socket type	max permissible load	wireless charger	USB	additional slot	power cord	color	
fi 60	AE-BPW3S60-20	3 x schuko	3600 W	-	-	-	150 cm	black	
	AE-BPW3S60-80	3 x schuko						silver	
	AE-BPW3S60U-20	3 x schuko						2 x USB-A	black
	AE-BPW3S60U-80	3 x schuko							silver
	AE-BPW3U60-20	3 x french			-			black	
	AE-BPW3U60-80	3 x french						silver	
	AE-BPW3U60U-20	3 x french						2 x USB-A	black
	AE-BPW3U60U-80	3 x french							silver
fi 100	AE-BPW3GS-20	3 x schuko	3600 W	-	-	-	150 cm	black	
	AE-BPW3GS-80	3 x schuko						silver	
	AE-BPW3GU-20	3 x french						black	
	AE-BPW3GU-80	3 x french						silver	
SOFT	AE-PBSC3GS-10	3 x schuko	3600 W	-	-	-	150 cm	white	
	AE-PBSC3GS-20N	3 x schuko						black	
	AE-PBSC3GS-53	3 x schuko						aluminium	
	AE-PBSUC2GS-10	3 x schuko						2 x USB-A	white
	AE-PBSUC2GS-20N	3 x schuko							black
	AE-PBSUC2GS-53	3 x schuko							aluminium
	AE-PBSC3GU-10	3 x french			-			white	
	AE-PBSC3GU-20N	3 x french						black	
	AE-PBSC3GU-53	3 x french						aluminium	
	AE-PBSUC2GU-10	3 x french						2 x USB-A	white
	AE-PBSUC2GU-20N	3 x french							black
	AE-PBSUC2GU-53	3 x french							aluminium
rectangular	AE-PBC3GU-10	3 x french	3600 W	-	-	-	150 cm	white	
	AE-PBC3GU-53	3 x french						aluminium	
	AE-PBC3GU-20	3 x french						black	
rectangular	AE-PBU2GU-10	2 x french	3600 W	-	2 x USB-A	-	150 cm	white	
	AE-PBU2GU-53	2 x french						aluminium	
	AE-PBU2GU-20	2 x french						black	
through-desk	AE-PBC3GS-53BKS	3 x schuko	3600 W	-	-	-	150 cm	aluminium	
	AE-PBC3GU-53BKS	3 x french						aluminium	
	AE-PBC3GS2U-53BKS	3 x schuko			2 x USB-A			aluminium	
	AE-PBC3GU2U-53BKS	3 x french						aluminium	
corner	AE-PBKT4S-80	4 x schuko	3600 W	-	-	-	150 cm	silver	
	AE-PBKT4U-80	4 x french						silver	
	AE-PBKT3S2U-80	3 x schuko			2 x USB-A			silver	
	AE-PBKT3U2U-80	3 x french						silver	
LUX	AE-ZLADLUX-40	-	-	10 W	-	-	200 cm	chrome	
hidden	AE-ZLADPOD-20	-	-	10 W	-	-	150 cm	black	
z USB	AE-ZUSB-20	-	-	10 W	1 x USB-A	-	200 cm	black	

furniture power socket / charger	indeks	socket type	max permissible load	wireless charger	USB	additional slot	power cord	color
BAR	AE-GM2FBAR-20	2 x french	3500 W	-	USB-A USB-C	1 x RJ45 1 x HDMI	150 cm	black
	AE-GM2FBAR-10	2 x french						white
	AE-GM2SBAR-20	2 x socket						black
	AE-GM2SBAR-10	2 x socket						white
SHUTTER	AE-GM1FSHU-20	1 x french	3500 W	-	-	-	150 cm	black
	AE-GM1FSHU-10	1 x french						white
	AE-GM1SSHU-20	1 x socket						black
	AE-GM1SSHU-10	1 x socket						white
TOWER	AE-GMW1FTOW-20	1 x french	3500 W	-	USB-A USB-C	-	150 cm	black
	AE-GMW1FTOW-10	1 x french						white
	AE-GMW1STOW-20	1 x socket						black
	AE-GMW1STOW-10	1 x socket						white
FLIP	AE-GM1FFLI-20	1 x french	3500 W	-	2 x USB-A	2 x RJ45	150 cm	black
	AE-GM1FFLI-10	1 x french						white
	AE-GM1SFLI-20	1 x socket						black
	AE-GM1SSLI-10	1 x socket						white







ul. Przejazdowa 21
05-800 Pruszków
Poland

 +48 22 44 47 595

 +48 22 44 47 366
+48 22 44 47 287

 +48 22 44 47 394

 +48 22 44 47 379

 +420 591 160 091



 +48 22 44 47 338





 +48 22 44 47 288
+48 22 44 47 552



 +48 22 4447 251

 тел: 8-495-640 15 88

 GTV Croatia d.o.o
Kovinska 4a, 10000 Zagreb
Hrvatska
+ 385 1 798 8089

 GTV Czech Distribution s.r.o.
CTPark Ostrava, Na Rovince 879
720 00 Ostrava-Hrabová
Česká republika
+420 591 160 091
objednavky.ostrava@gtv.com.pl

 GTV España Herrajes e Iluminación, S.L.
Avenida Aragón 30, Planta 8
46021 Valencia (España)
+ 34 961 134 441
+ 48 22 44 47 377
gtv@gtv.es

fax: +48 22 444 75 01

e-mail: oswietlenie@gtv.com.pl
east.lighting@gtv.com.pl

www.gtv.com.pl

Follow us on

